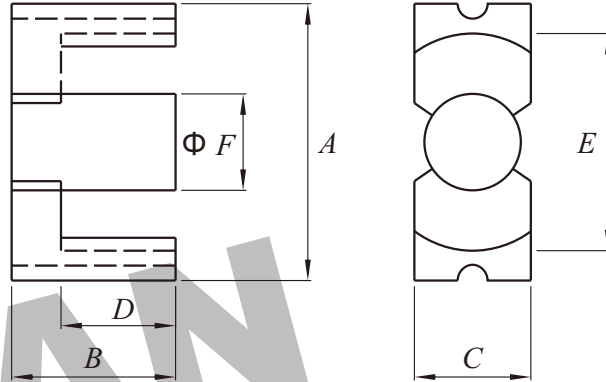




Dimension: (UNIT: mm)

A	120.0 ± 2.0
B	50.5 ± 0.65
C	30.0 ± 1.0
D	35.5 ± 0.5
E	93.3min
F	30.0 ± 1.0
G	
H	

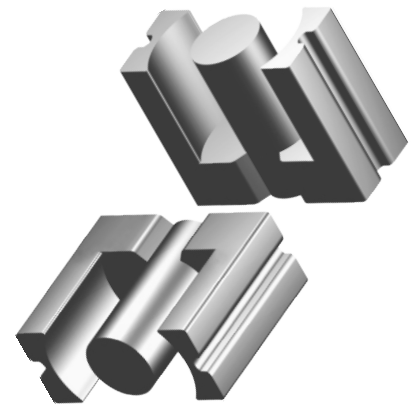


Test conditions

AL: F=1.0KHZ U=0.3V N=10Ts

Effective parameter

C1(mm) ³	Ae(mm)	Le(mm ²)	Ve(mm ³)	Weight(g)
0.291	773	225	196490	≈ 500



Core halves

AL measured in combination with an non-gapped core half, unless otherwise stated.

Grade	AL (nH)	μe	AIRGAP μe	Type number
P3	7000±25%		≈0	EC120-P3

Properties of core sets under power conditions

Grade	B (mT)at	Core loss (w) at	
	H=250 A/m F=25KHz T=100℃	F=25 KHz B=200mT T=100℃	f=100 KHz B=100mT T=100℃
P3			

Note

- 1:Document is the property of FUAN Inc & is not allow to be duplicated without authorization
- 2:RoHS compliant.